

Products /  **CASTALDI** / ERAD/C D54 / D54 ERAD/C3 / D54/F36-AL

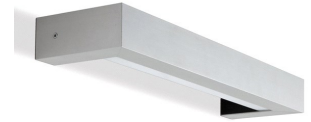
ERAD/C D54 D54/F36-AL

TECHNICAL DATA

GENERAL



Item code	D54/F36-AL
Place installation	outdoor
Name	D54 ERAD/C3 / D54/F36-AL wall mounted
Note	Standard finish polished stainless steel finish. Class II insulation on request. DALI version on request.
Standard colour	AL - aluminium grey (similar to RAL 7040)
Variant colour	GR - graphite satin finish (similar to RAL 7022)
Environments	façades and architectural works, wellness, hallway, conference hall, places of worship



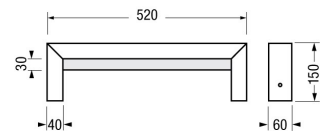
PHYSICAL

Installation type	wall mounted
Mounting type	surface
Screws	AISI 304 stainless steel screws.
Seals	Silicone Rubber.
Body	Steel body with polyester powder coating, with a pluri-processed against corrosion (passed the exposure of over 1500 hours in a saline mist environment).



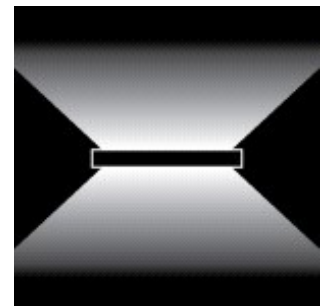
DIMENSIONS

L: Total length device (mm) 520



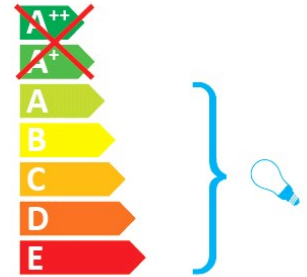
OPTICAL SYSTEMS

Opening beam	diffused
Reflectors	Extra-pure aluminium reflector.
Diffuser	Metacrylate satin finish.



ENERGY SAVING

This luminaire is compatible with bulbs of the energy classes:



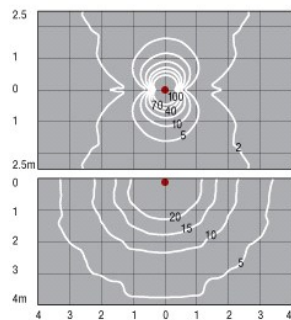
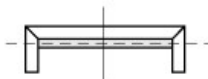
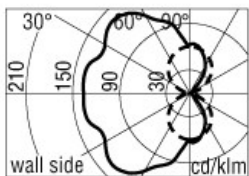
SOURCES

Source Type	Source Power	System Power	Source	Lamp Socket	Sources Temperature Colour	Nominal Flux	Output Flux	Source description
compact fluorescent	36W	-	TC-L	2G11	-	2900 lm	-	-

ELECTRICAL

Ballast type	Electronic
Mounting ballast type	Integral
Line input	Use only (EN 60598-1) cable type H07RN-F with diameter between 8 and 10mm.
Voltage	220-240V
Frequency	50-60Hz

PHOTOMETRICS



isolux distribution
on white colour wall
fixture height 2.5m
*distribuzione isolux
parete colore bianco
apparecchio h 2.5m*

isolux distribution on ground
distribuzione isolux al suolo

NORMS / DIRECTIVES

Norms	EN 60598-1, EN 60598-2-1
Directives	2014/35/UE, 2014/30/UE

ACCESSORIES

OPTIONAL ACCESSORIES

Structural

Accessory code	D54/B36-AL
Technical description	Wire cover canopy. -AL ALUMINIUM

